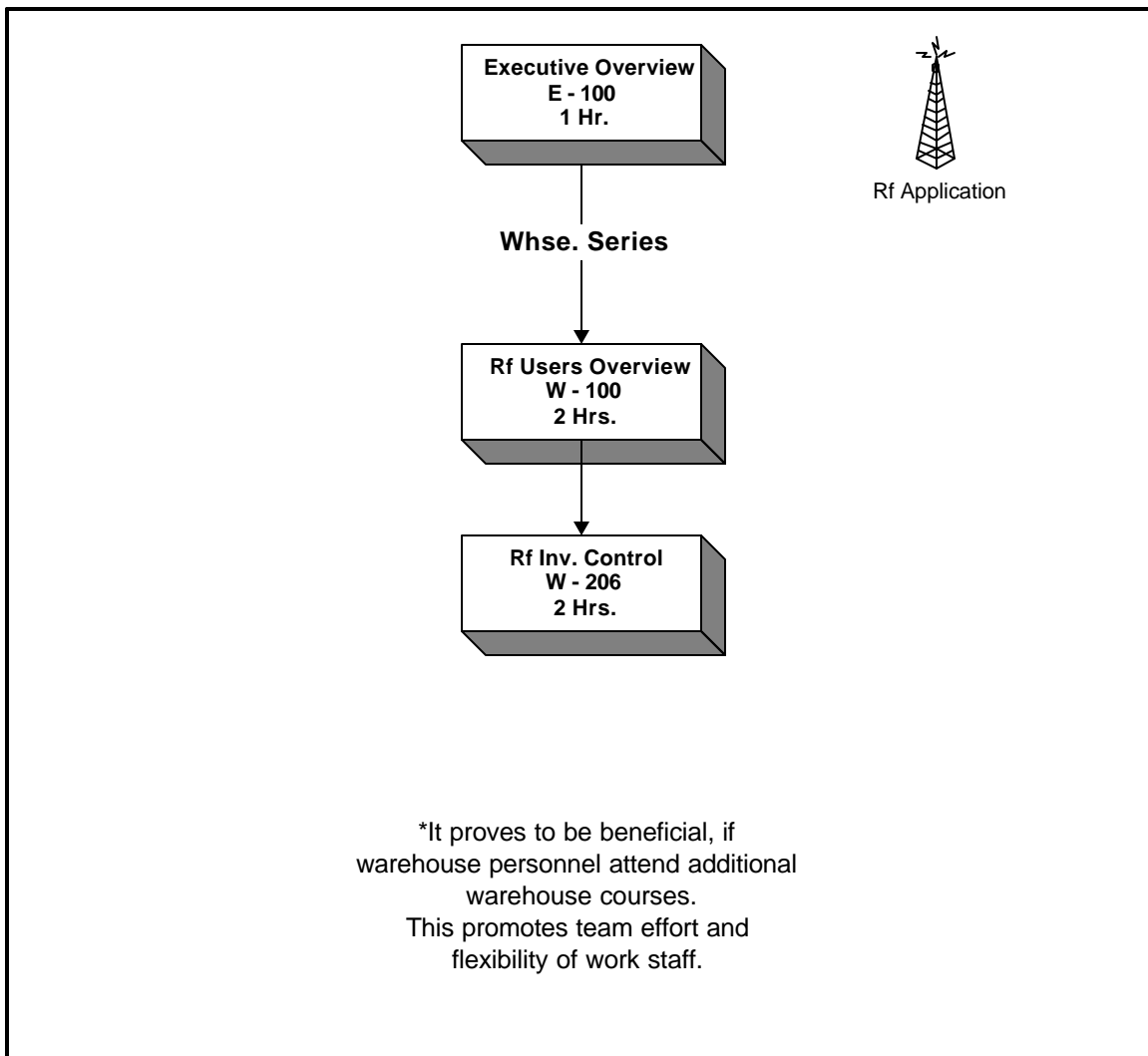


Recommended Training Path

Warehouse Rf Inventory Control



This diagram represents the courses related to the specific dept. named, along with the suggested sequence in which the courses should be completed.

Following this diagram assists in ensuring that the most complete training is achieved by each student.

Course Series: Warehouse
Course Number: W-206
Course Title: Inventory Control

Prerequisites:

Successful completion of the following:
W-100

Length: 2 Hours

Course Objectives:

This course covers information used on the Rf system to manage inventory accuracy and control of material within IRMS. Students will learn how to use functions within Rf menus to conduct physical inventory counts, complete cycle counts and administer adjustments of discrepancies. Upon completion of this course students possess essential abilities to control inventory issues ensuring accuracy and reliability.

Topics Covered:

- **Terms & Definitions**
- **Physical Inventory**
- **Cycle Counts**
- **Stock Adjustments**
- **Inquiries**
- **Item Maintenance**
- **Creating Kits**

Associated Courses:

M-206
All courses within the Warehouse Series can be resourceful. This will encourage team effort and the ability to understand the structure of IRMS

Costs:

Per Student:	\$200
Block (1-6) students:	\$600
Additional Students:	\$100