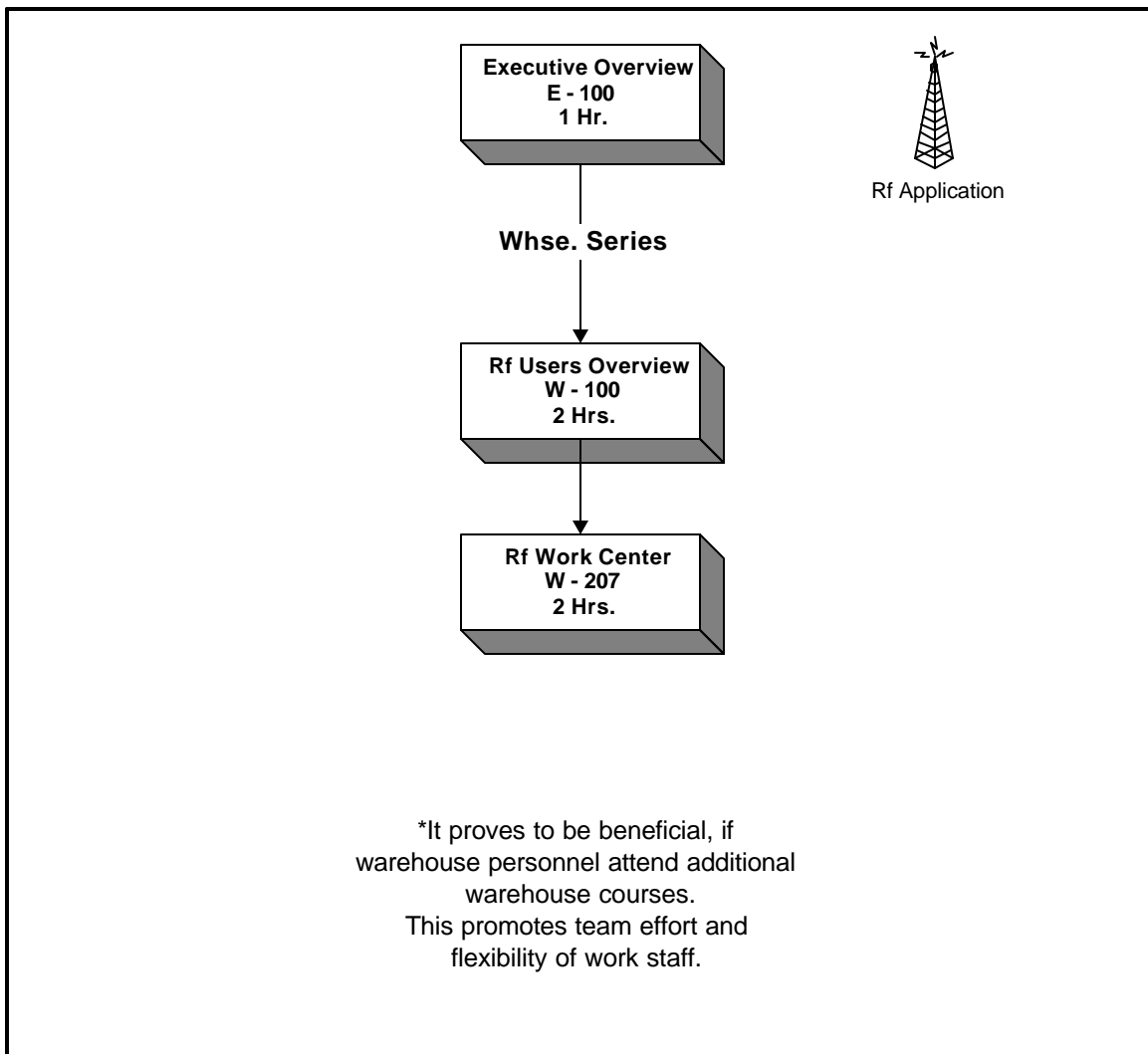
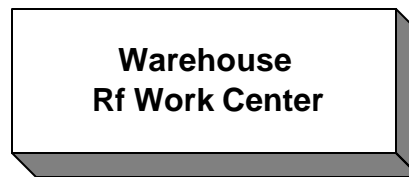


## Recommended Training Path



This diagram represents the courses related to the specific dept. named, along with the suggested sequence in which the courses should be completed.

Following this diagram assists in ensuring that the most complete training is achieved by each student.

**Course Series: Warehouse**  
**Course Number: W-207**  
**Course Title: Work Center Mgmt.**

**Prerequisites:**

Successful completion of the following:  
W-100

**Length: 2 Hours**

**Course Objectives:**

This course covers the area of Work Centers within IRMS. Students attending this course will learn the processes needed to take materials from within the warehouse, group the materials and create a finished product. The end product produced within the Work Center will possess a unique part number which will represent the assembled unit. Students will learn how materials are staged and transferred into the Work Center, along with the process of releasing material exiting the Work Center.

**Topics Covered:**

- **Terms & Definitions**
- **Staging**
- **Receiving**
- **Creating Pallets**
- **Releasing Materials**
- **Inquiries**

**Associated Courses:**

All courses within the Warehouse Series can be resourceful. This will encourage team effort and the ability to understand the structure of IRMS.

**Costs:**

Per Student:	\$200
Block (1-6) students:	\$600
Additional Students:	\$100